



Install Manual

STRUCTURAL

Concept

Components

Image	Code	Désignation	Matière	Dimensions	Conditionnement
	0676	Aluminum joist	Aluminum Alloy T6066, black coated	Length 3000 mm Width 60 mm Height 40 mm	1 pc
	0677	Joist adapter AL60	Polypropylene	Diameter 122 mm Height 13 mm	1 pc
	0337	NIVO pedestal	Polypropylene	Height 25 - 40 mm	1 pc
	0273	NIVO pedestal	Polypropylene	Height 40 - 60 mm	1 pc
	0274	NIVO pedestal	Polypropylene	Height 50 - 80 mm	1 pc
	0275	NIVO pedestal	Polypropylene	Height 80 - 140 mm	1 pc
	0276	NIVO pedestal	Polypropylene	Height 140 - 230 mm	1 pc
	0206	Height extension NIVO pedestal	Polypropylene	Height 60 mm	1 pc
	0338	Slope corrector 2-5%	Polypropylene		1 pc
	0678	Cobra clip Tee-AL	AISI 304 (A2 stainless steel)	Length 32 mm Width 22 mm Height 20 mm	Set of 90 clips + 90 screws + 1 bit
	0686	Assembly bracket	Aluminum, black coated	35x35x35 mm T thickness 1,5 mm	Set of 20 brackets + 40 self drilling hexagon head screws 4,8x19 mm
	0687	Joist sleeve	Aluminum, black coated	Length 175 mm Height 35 mm Thickness 0,5 mm	Set of 8 connectors for 4 connections + 16 self drilling hexagon head screws 4,8x19 mm
	0689	Start/End clips	Black coated steel		Set of 10 clips + 10 screws
	0690	Finishing screw Grey	AISI 410	M4,5 x 35 mm	90 screws
	0691	Finishing screw Brown	AISI 410	M4,5 x 35 mm	90 screws
	0939	EPDM adhesive tape	Self adhesive cellular rubber	Thickness 5 mm Width 10 mm	Roll of 20 ml

The concept

Clip Cobra Tee-AL

- Universal clip for all grooved decking boards
- Pre-loaded screw, quick installation
- Easy one touch insert inside the board groove

Aluminum joist

- Patented profile made from light aluminium alloy
- Strong and durable sub structure
- Exclusive black coating finish

EPDM Adhesive tape

- Reduce the vibrations
- Avoid condensation for natural wood decking

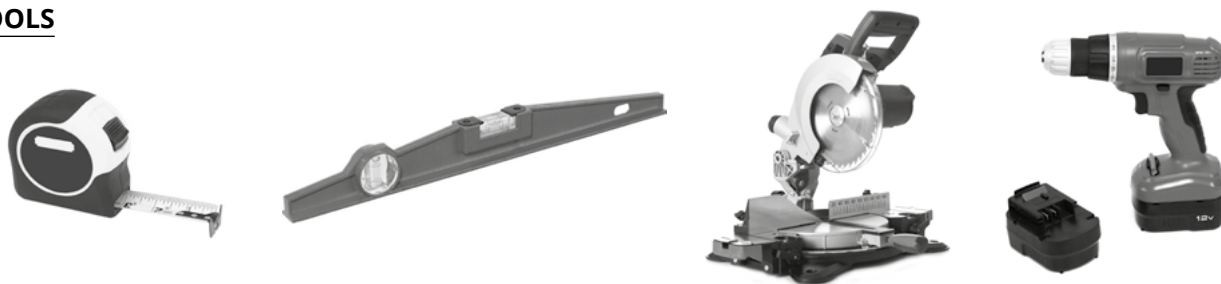
Joist sleeve

- To connect joists.
- Integrated centering pin

Joist adapter AL60

- To be fixed on top of NIVO pedestals
- Easy clip installation : no drilling, no screwing

TOOLS



Important notice

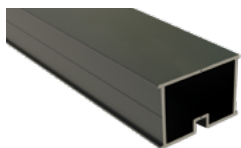
- Check that the supporting ground is healthy, flat and stable and that it has a slope of 1% from the house to the outside.
- The spacing between the pedestals under the joists must not exceed 75 cm, overhang of 20 cm maximum.

STEP 1 : OUTSIDE FRAME

Start by placing the peripheral joists along the edges, to create a frame.

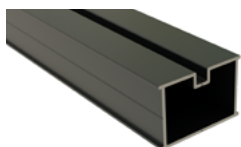
• Case 1 : Screw installation

The grooved side of the joist must be down.



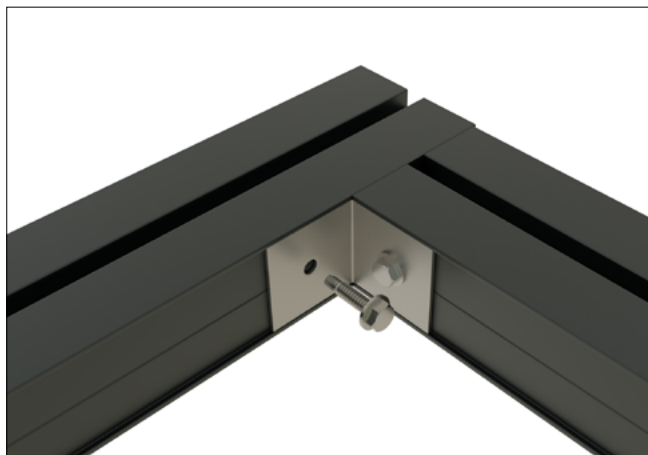
• Case 2 : Clip installation

The grooved side of the joist must be up.

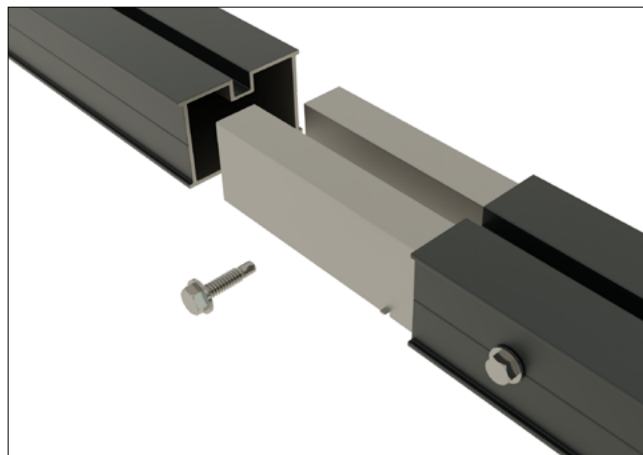


Connecting joists:

- The assembly brackets for 90 ° angles. It is possible to fold the brackets to obtain a custom angle.



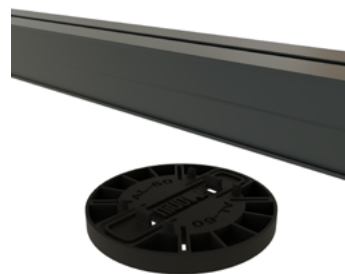
- The butt connectors for sleeving two straight joists



STEP 2 : JOIST ADAPTER

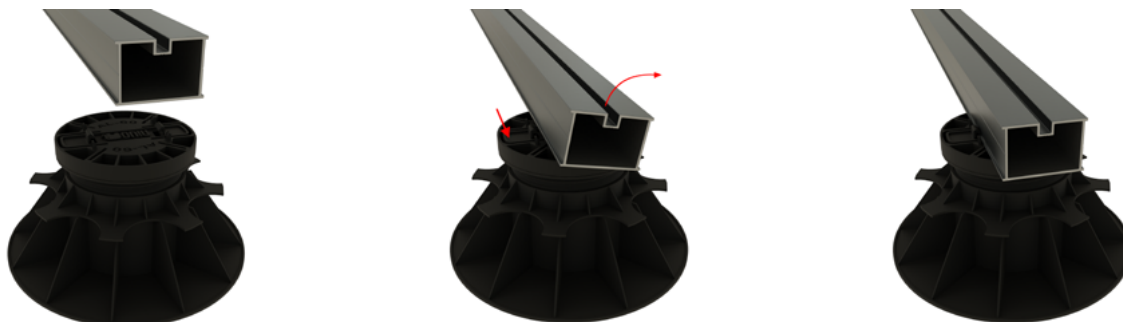
• Case 1 : direct installation on joist adapter H : 13 mm

Slide the adapters under the joist and assemble by clipping.

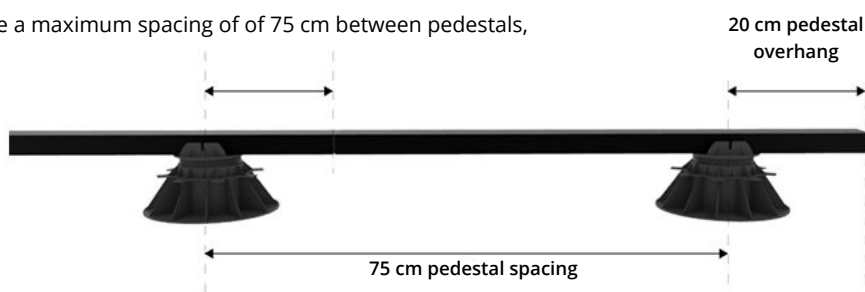


• Case 2 : pedestal installation + joist adapter

Slide the adapters under the joist and assemble by clipping, then assemble the adapter to the pedestal.

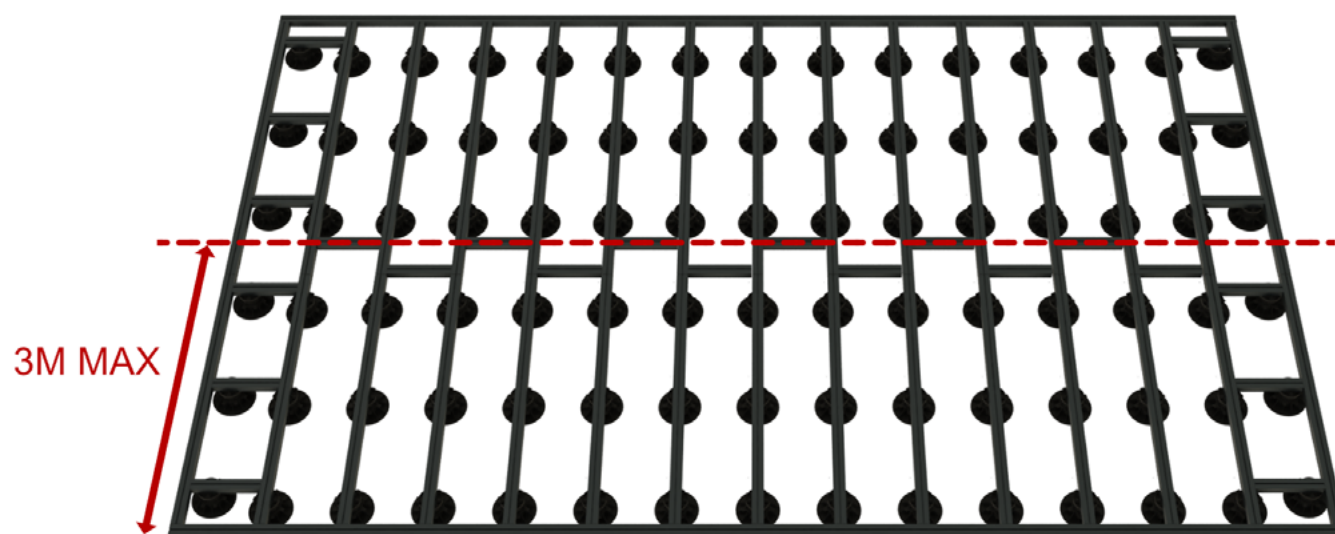


In both cases, provide a maximum spacing of 75 cm between pedestals, and 20 cm overhang.



STEP 3 : JOISTS AND BRIDGES INSTALLATION

- Adjust the height of the pedestal by turning the ring by hand to the desired height
- Then adjust the distance between the joists according to the recommendations of the manufacturer of the decking boards.
- Cut the joists to obtain bridges.
- The bridges will allow to maintain a perfect parallelism between the joists.
- At each corner of the frame, place a bridge as shown in the diagram.
- Finally, to allow the installation of the fascia, place the pedestals towards the inside of the frame.



STEP 4 : DECKING INSTALLATION

4.1 - Unroll the EPDM adhesive tape on the joists, on each side of the groove.



4.2 - Screw the first board. Place the clips in the grooves of the board and also of the joist, by making a simple hand pressure



4.3 - Position the second board then screw between the 2 boards using the long bit provided.



4.4 - Repeat the previous steps until the last board.



4.5 - Secure the last board with the start / end clip. The oblong hole in the clip allows you to adjust it according to the height of the groove in the deck board. Fix the fascia on the periphery of the frame using 4x35 mm screws.



